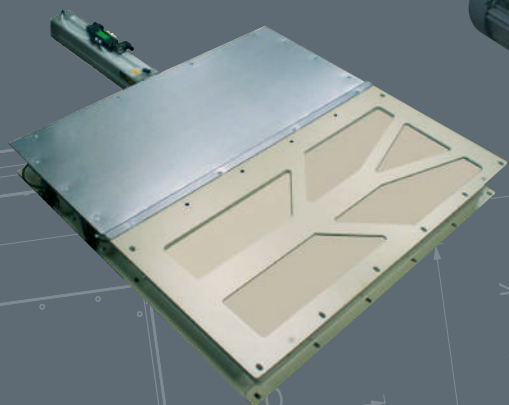
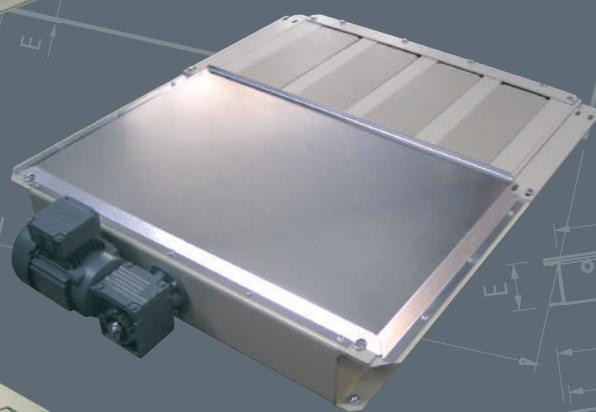
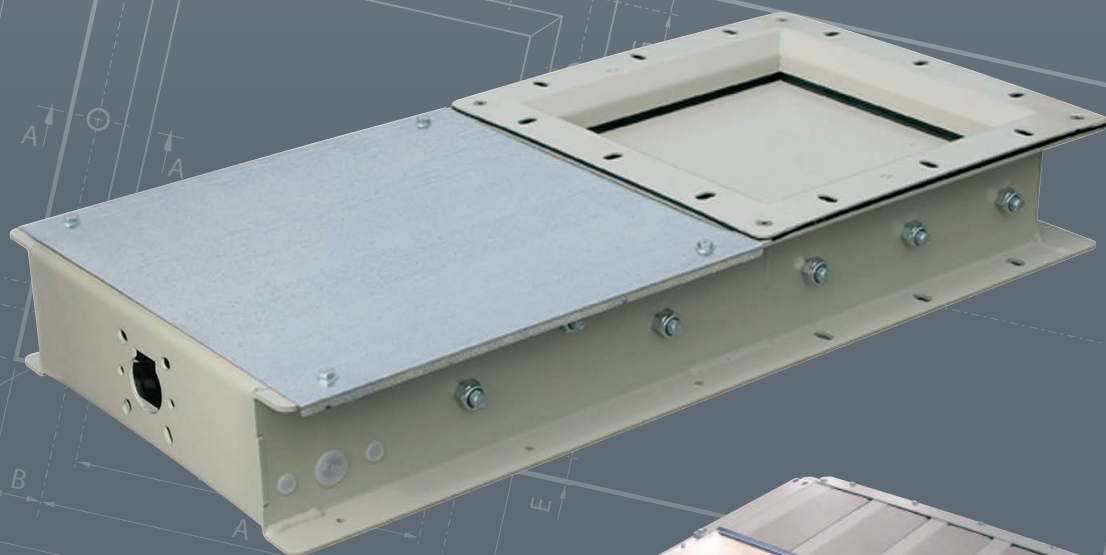


SKANSLIDE SLIDEVALVES



SBK



SKANDINAVISK A/
BÅNDKOMPAGNI S



SBK A/S offers a wide range of manual, electronic and pneumatic slidevalves.

We offer valves painted with RAL 7032, and made in AISI 304 or AISI 316 steel.

In addition to standard slide valves, we offer slide valves for chain conveyors and vertical slidevalves.



PRODUCTS



Horizontal slidevalves

Grain size >1,2 mm

TGS FDA 80° / SILICONE 200° C

TGH 600° C

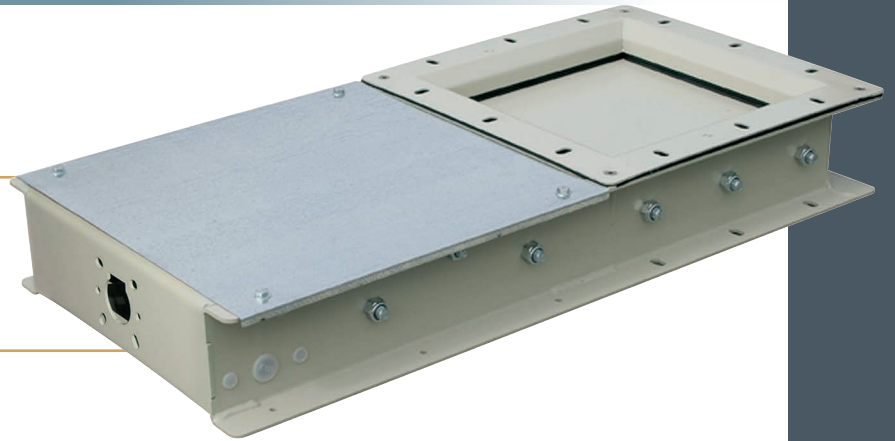
Part icle size >0,3 mm

TGE FDA 80° / C

TGT SILICONE 200° C

Part icle size >0,3 mm

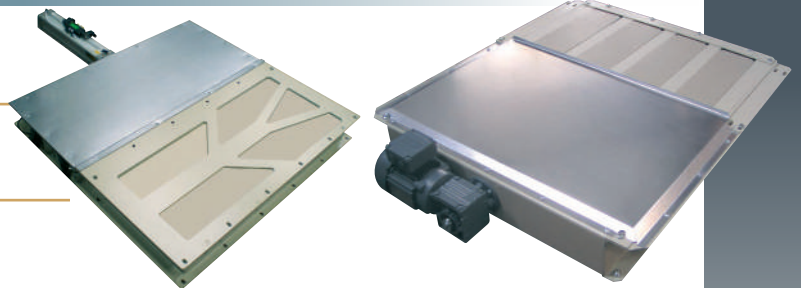
TGR FDA 80° C



Chain conveyor slidevalve

TTS BASIC SLIDEVALVES

TGE BASIC SLIDEVALVES NO STOP



Vertical slidevalves

TVS BASIC SLIDEVALVES

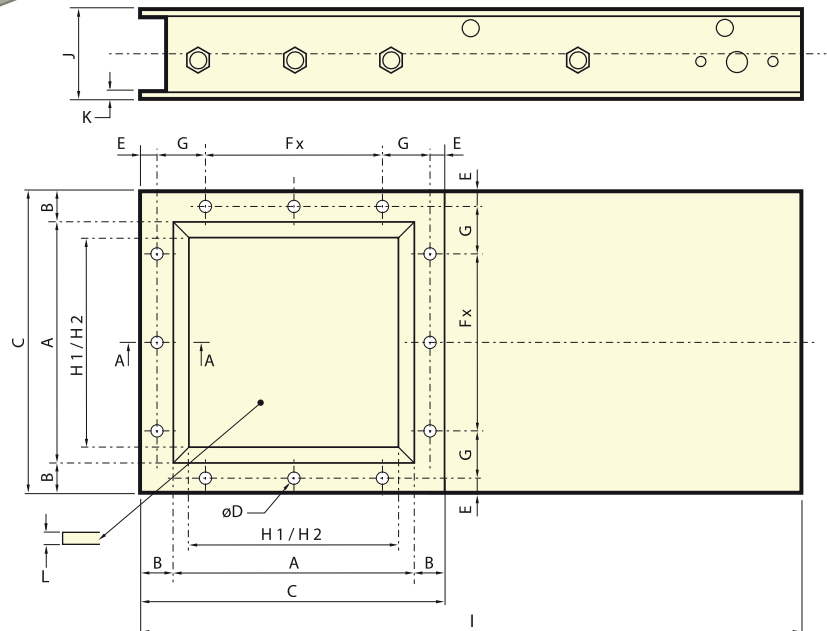
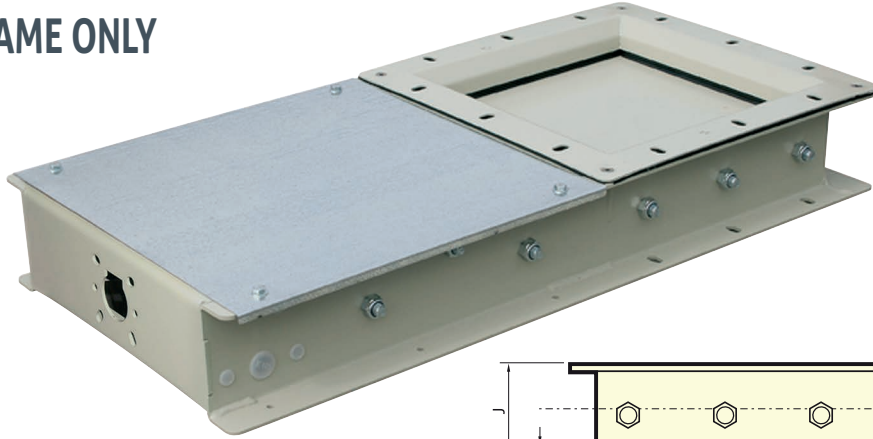
TVD DOUBLE SLIDEVALVES FOR DOSING



Subject to alterations

SKANSLIDE SLIDEVALVES

FRAME ONLY



mm	A	B	C	øD	E	Fx	G	H1*	H2'	I	J	K	L
150	150	33	216	9	15	95	45,5	150	116	490	98	3	4
200	200		266			140	48	196	162	590			
250	250	45	316	11	20	2x95	48	246	212	690	114	4	6
300	300		390			2x110	65	296	262	805			
350	350		440			2x140	60	346	312	905			
400	400	45	490	11	20	2x160	65	396	362	1025	124	5	8
450	450		540			2x180	70	446	412	1125			
500	500	590	3x140	65	496	462	1225						

* H1 for slidevalves type TGS-TGH (p. 5)
H2 for slidevalves type TGE-TGT-TGR (p. 5)

VALVES

STANDARD MODEL:

- A coat of paint RAL 7032
- Performing in stainless steel on request

Subject to alterations

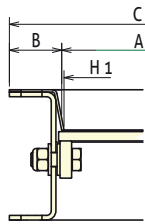
SKANSLIDE SLIDEVALVES

DUSTPROOF SEALS

 Zone 21

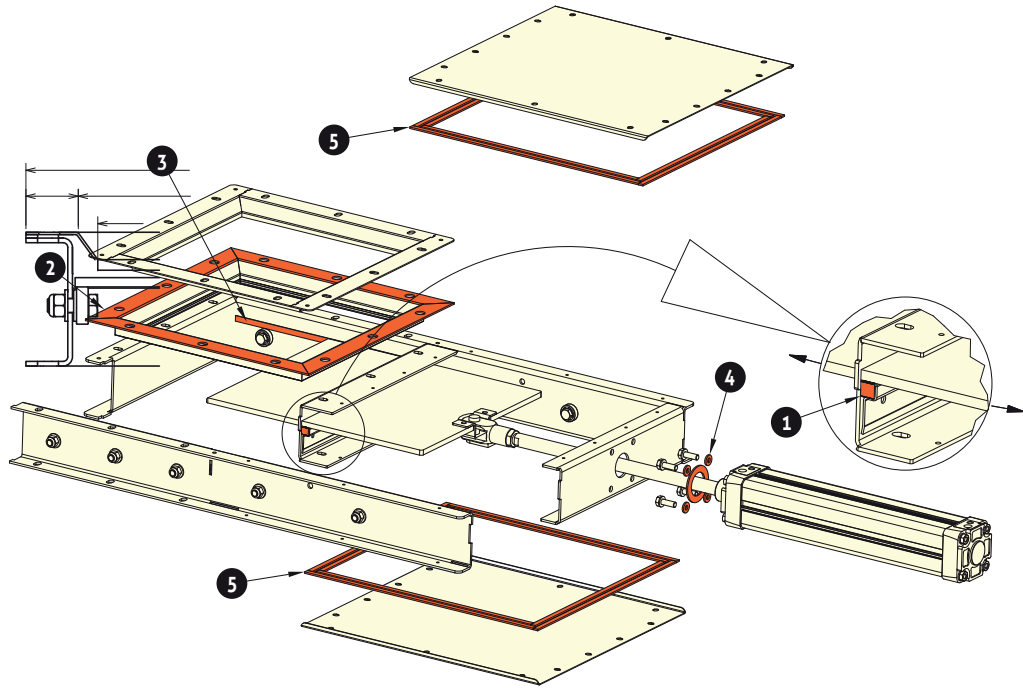
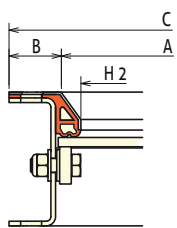
Type :

TGS - TGH



Type :

TGE - TGT - TGR



DUSTPROOFNESS						
REFERENCE	1	2	3	4	5	
TGS 80°C/200°C ☼ > 1,2 mm FDA	FDA/Silicone 80°C/200°C	-	-	-	-	-
TGH 600°C ☼ > 1,2 mm	600°C	-	-	-	-	-
TGE 80°C ☼ > 0,3 mm FDA	FDA 80°C	FDA 80°C	-	-	-	-
TGT 200°C ☼ > 0,3 mm FDA	Silicone 200°C	Silicone 200°C	-	-	-	-
TGR 80°C ☼ > 0,3 mm FDA	FDA 80°C	-	FDA 80°C FDA vulcanized	FDA 80°C	FDA 80°C	FDA 80°C

☼ = Size Grading

REFERENCE:

TG Slidevalves

S Standard

H Temperature resistant 600° C

E Dustproof + FDA approved

T Dustproof + Temperature resistant 200° C

R Full dust tightness – strengthened

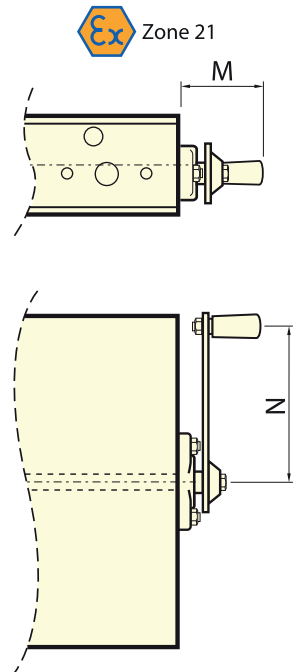
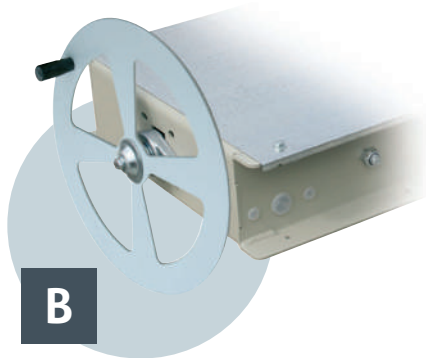
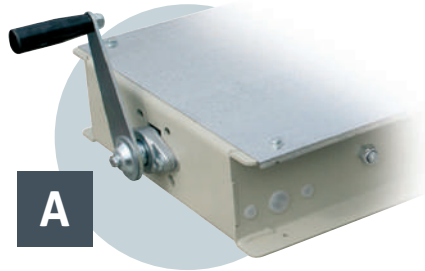
TGS

Subject to alterations

CONTROLS

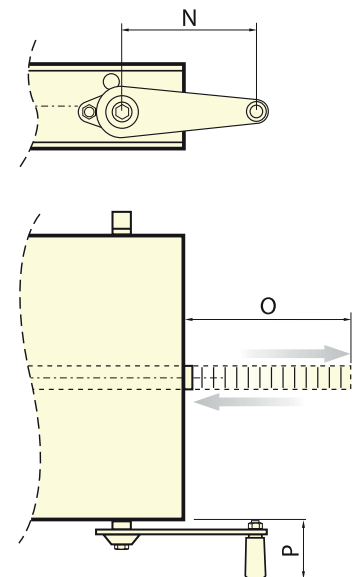
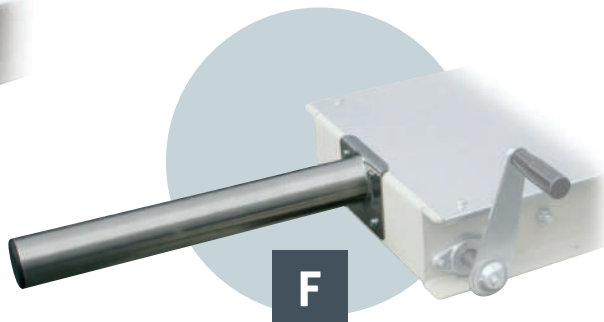
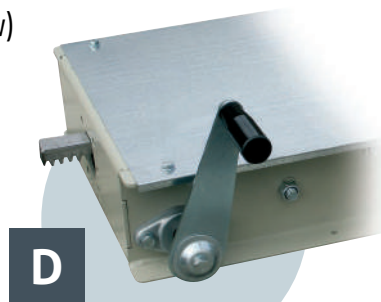
SKANSLIDE SLIDEVALVES MANUAL CONTROLS

- Screw TR20 – gate 12 L
- **A** with handle
- **B** with control wheel
- **C** with chain drive



RACK CONTROL

- M3 rack control (away from production flow)
- 18-tooth chain drive
- **D** with control wheel
- **E** with chain drive
- **F** Optional: rack control protection



SKANSLIDE SLIDEVALVES

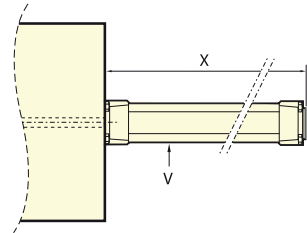
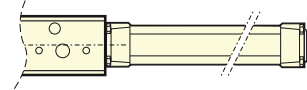
CONTROLS

 Zone 21

PNEUMATIC DRIVE

Cylinder with:

- 2 Exhaust flow controllers
- Magnetic vent 5/2 – 1 EV 48 V AC
- Tubing supply \varnothing 6/8

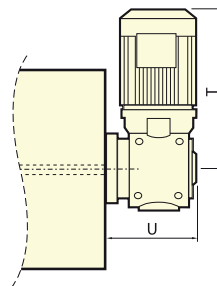
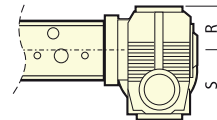


ELECTRICAL MOTOR CONTROL

- 3 phased voltage 230/400 V – 50 Hz IP55
- Screw TR20 - Pitch 12 L



mm	M	N	O	P	R	S	T	U	V	X
150			155						\varnothing 50x200	350
200			205						\varnothing 50x250	360
250			255						\varnothing 50x250	360
300	50	150	305	70	54	128	250	114	\varnothing 63x350	475
350			355						\varnothing 63x350	475
400			405						\varnothing 80x400	532
450			455						\varnothing 80x400	532
500			505						\varnothing 100x500	642



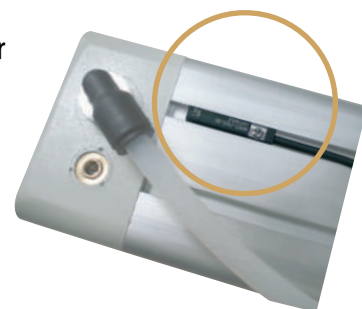
INDUCTIVE ENDSTOP

- Fixed on slidevalve frame

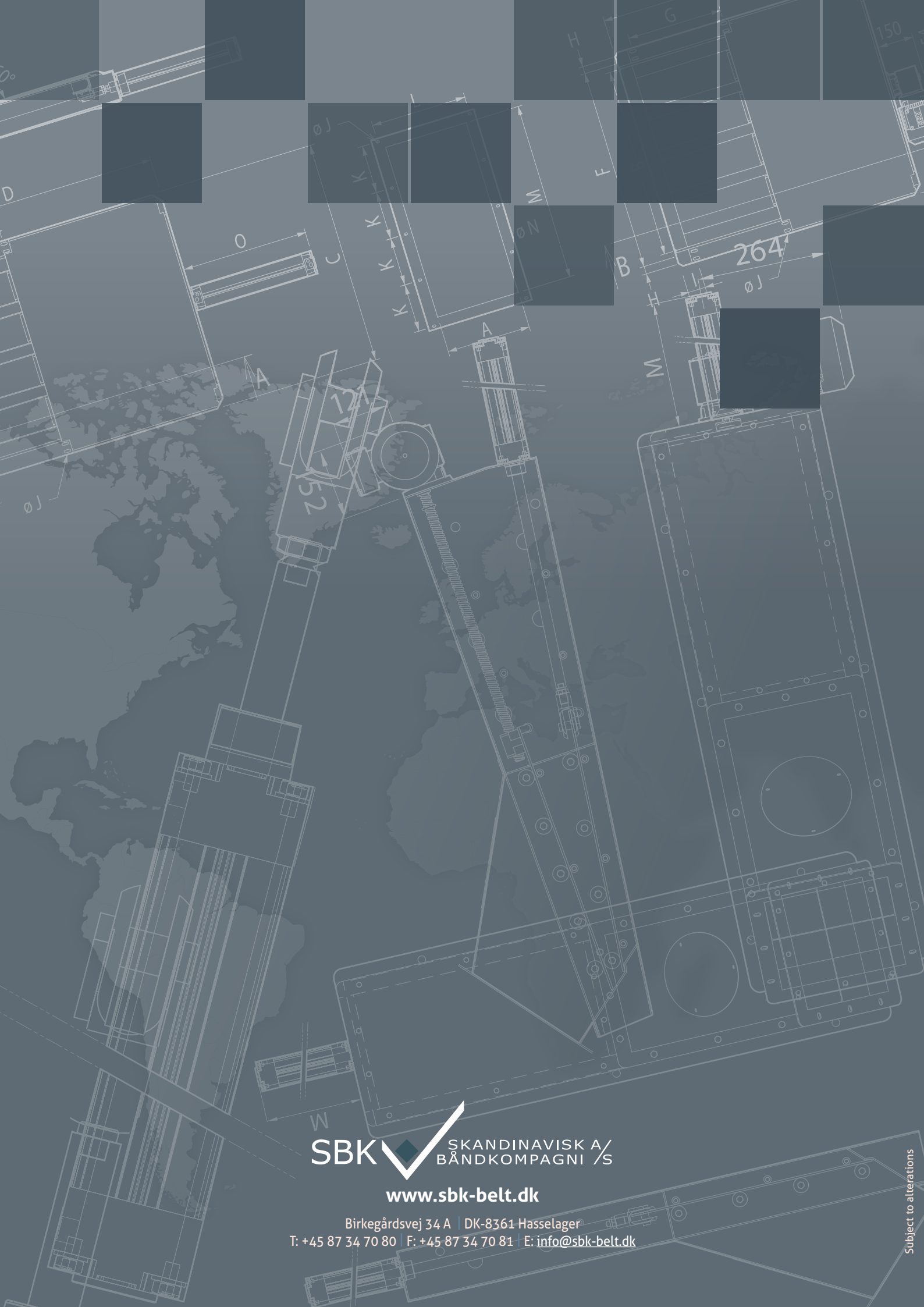


REED SWITCH

- Fixed on cylinder



Subject to alterations



SBK  SKANDINAVISK A/
BÅNDKOMPAGNI S

www.sbk-belt.dk

Birkegårdsvej 34 A | DK-8361 Hasselager
T: +45 87 34 70 80 | F: +45 87 34 70 81 | E: info@sbk-belt.dk